

A = ALTCEW's Post St. Location

C = Entrance to Rock Pointe Complex

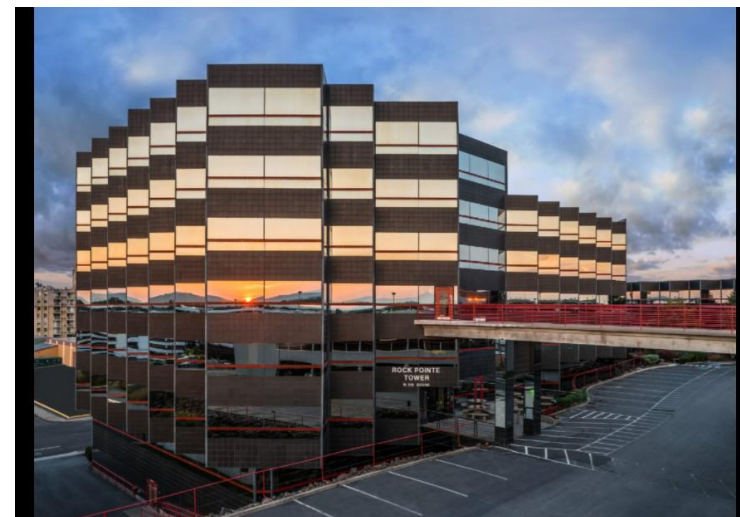
D = Rock Pointe Tower Building (image below)

- Enter off N Washington St (see C on map above)
- Veer right to get to the "Tower" building (see D on map above)
- 2-hour guest parking is available in front of the building. Parking garage is also free for parking.
- You are on the 3rd floor as you enter the Tower building
- ALTCEW on 2nd floor, stairs and elevator are straight ahead.
- After taking the stairs or elevator turn left and the entrance for suite #260 is at the end of the hall.

ALTCEW's Rock Pointe Staff Include:

*Care Services, Health Homes, RN Consultants,
Community Living Connections, Shiba, &
Planning and Resources*

Case Managers are located at our Post St. Location



We look forward to seeing you here!